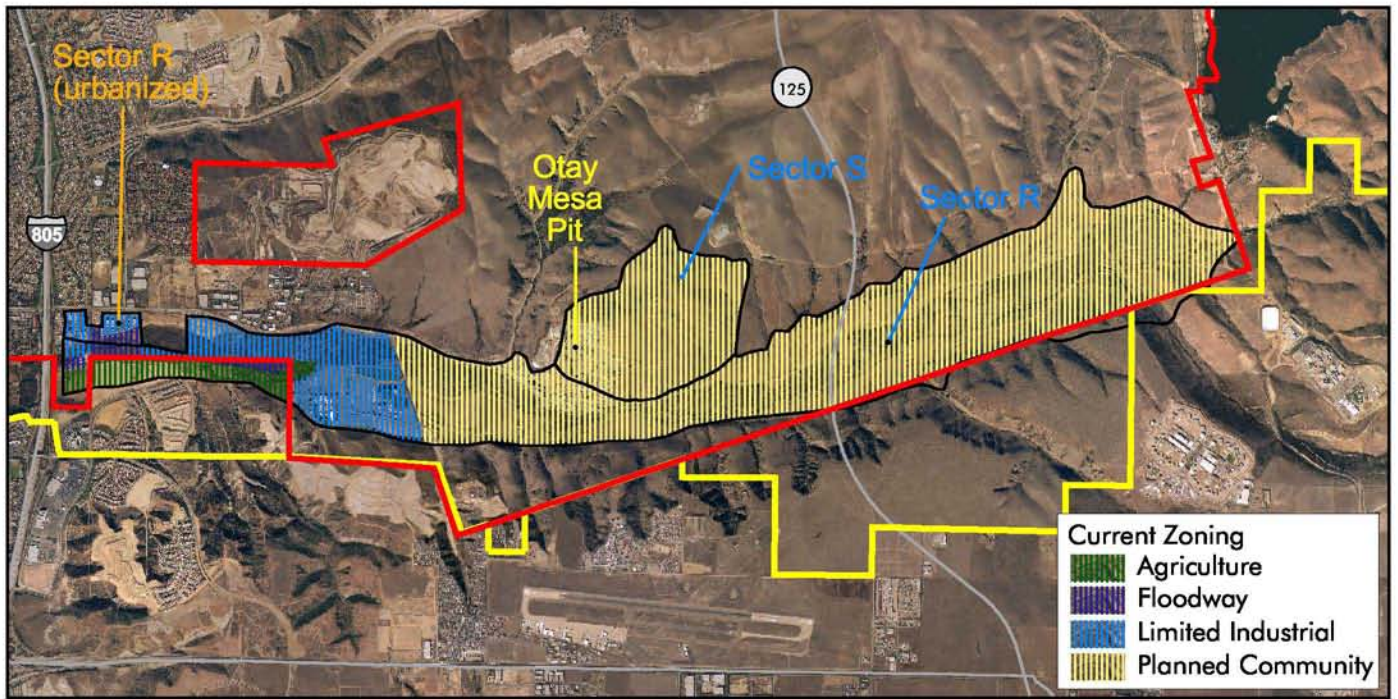


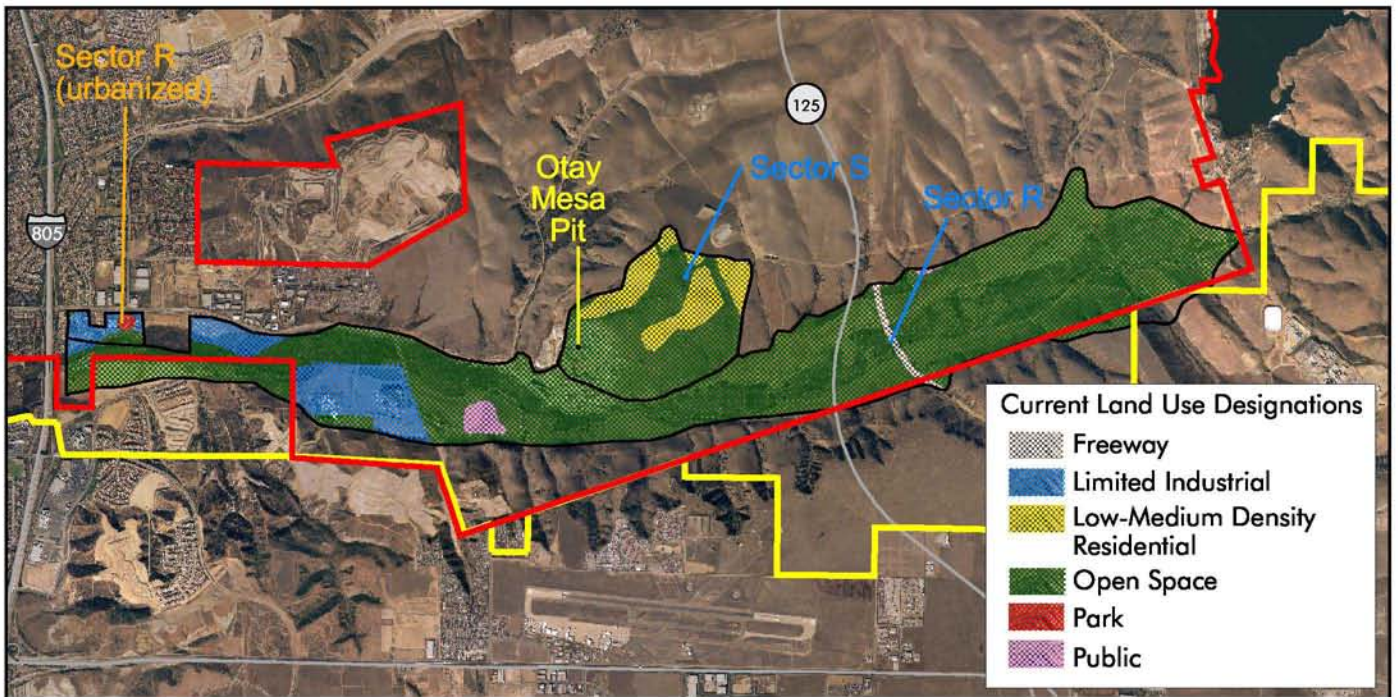
- Chula Vista municipal boundary
- Chula Vista General Plan area
- "Regionally Significant" MRZ-2 Aggregate Resource Area
- "Regionally Significant" MRZ-2 Aggregate Resource Area - Urbanized





FIGURE 5.16-1  
"Regionally Significant" MRZ-2  
Aggregate Resource Areas



Zoning within "Regionally Significant" MRZ-2 Aggregate Resource Areas



Land Use Designations within "Regionally Significant" MRZ-2 Aggregate Resource Areas

-  Chula Vista municipal boundary
-  Chula Vista General Plan area



**FIGURE 5.16-2**  
**Comparison of Current Land Use Designations and Zoning within MRZ-2 Aggregate Resource Areas**