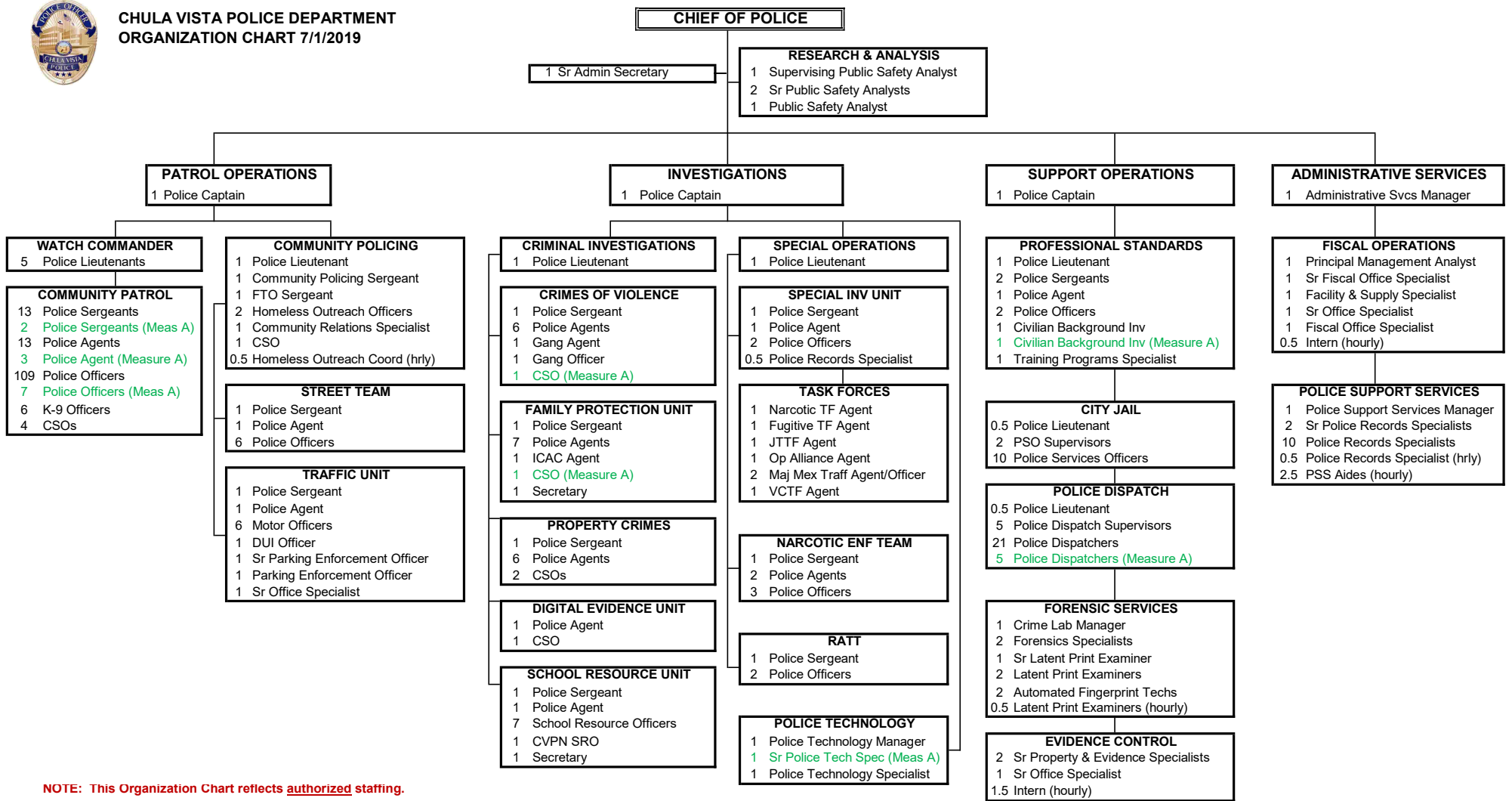




**CHULA VISTA POLICE DEPARTMENT  
ORGANIZATION CHART 7/1/2019**



**NOTE:** This Organization Chart reflects authorized staffing.

**DEPARTMENT SUMMARY**

Chief	1	Total Sworn	249
Captains	3	Total Civilian	100.5
Lieutenants	10		349.5
Sergeants	28	Hourly	6
Agents	51		
Officers	156	<b>TOTAL</b>	<b>355.5</b>

**DIVISION SUMMARY**

6	Total Office of the Chief
191	Total Patrol Operations
69.5	Total Investigations
67	Total Support Operations
23	Total Administrative Svcs
<b>355.5</b>	<b>Total Authorized</b>

**MEASURE A POSITIONS**

- 2 Police Sergeants
- 3 Police Agents
- 7 Police Officers
- 5 Police Dispatchers
- 2 Community Service Officers
- 1 Sr Police Technology Specialist
- 1 Civilian Background Investigator
- 21 MEASURE A POSITIONS**

Org Chart doesn't include 9 frozen positions (7 sworn, 2 civilian)  
7 Officers, 1 Detention Mgr, 1 Comm Mgr