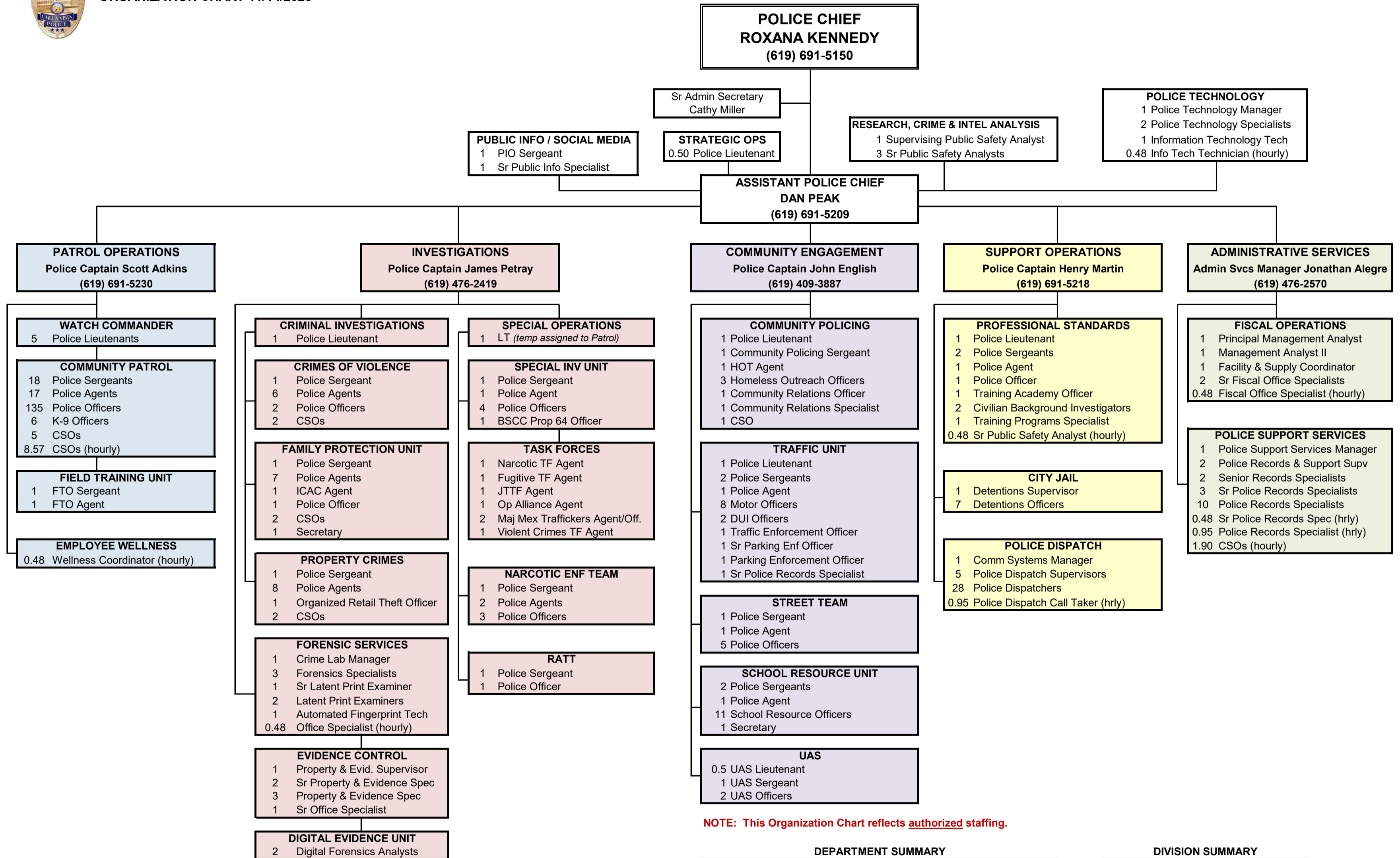




**CHULA VISTA POLICE DEPARTMENT
ORGANIZATION CHART 11/14/2025**



NOTE: This Organization Chart reflects authorized staffing.

DEPARTMENT SUMMARY			
Chief	1	Total Sworn	296
Assistant Chief	1	Total Civilian	114
Captains	4	Full-Time	410
Lieutenants	11		
Sergeants	35	Hourly	15.25
Agents	55		
Officers	189	TOTAL	425.25

DIVISION SUMMARY	
13.98	Total Office of the Chief
198.05	Total Patrol Operations
78.48	Total Investigations
53.50	Total Community Engagement
53.43	Total Support Operations
27.81	Total Administrative Services
425.25	Total Authorized