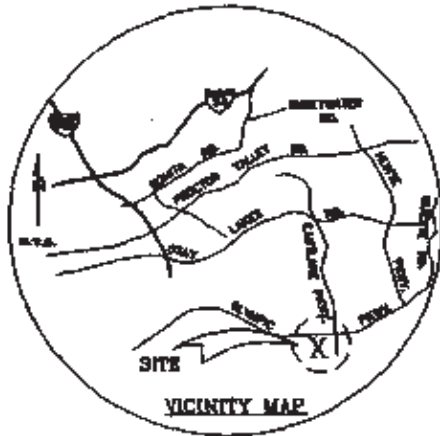


# MAP OF PROPOSED BOUNDARIES COMMUNITY FACILITIES DISTRICT NO. 12M (VILLAGE 7)

CITY OF CHULA VISTA  
COUNTY OF SAN DIEGO  
STATE OF CALIFORNIA



ALL COPIES OF THIS MAP MUST BE  
MAINTAINED ON FILE IN THE  
OFFICE OF THE CITY CLERK AND THE  
COUNTY RECORDER. THIS MAP IS  
VALID FOR THE CITY OF CHULA VISTA  
AND SAN DIEGO COUNTY RECORDS OFFICE  
DATE: 03-15-2008



FILED IN THE OFFICE OF THE CITY CLERK THIS 15<sup>th</sup> DAY OF  
MARCH 2008

I HEREBY CERTIFY THAT THE MAP SHOWING PROPOSED BOUNDARIES  
OF CITY OF CHULA VISTA COMMUNITY FACILITIES DISTRICT NO. 12M (VILLAGE 7),  
CITY OF CHULA VISTA, COUNTY OF SAN DIEGO, STATE OF CALIFORNIA, WAS  
APPROVED BY THE CITY COUNCIL OF THE CITY OF CHULA VISTA AT A REGULAR  
SESSION THEREOF, HELD ON THE 15<sup>th</sup> DAY OF MARCH  
2008, BY ITS RESOLUTION NO. 2008-0315

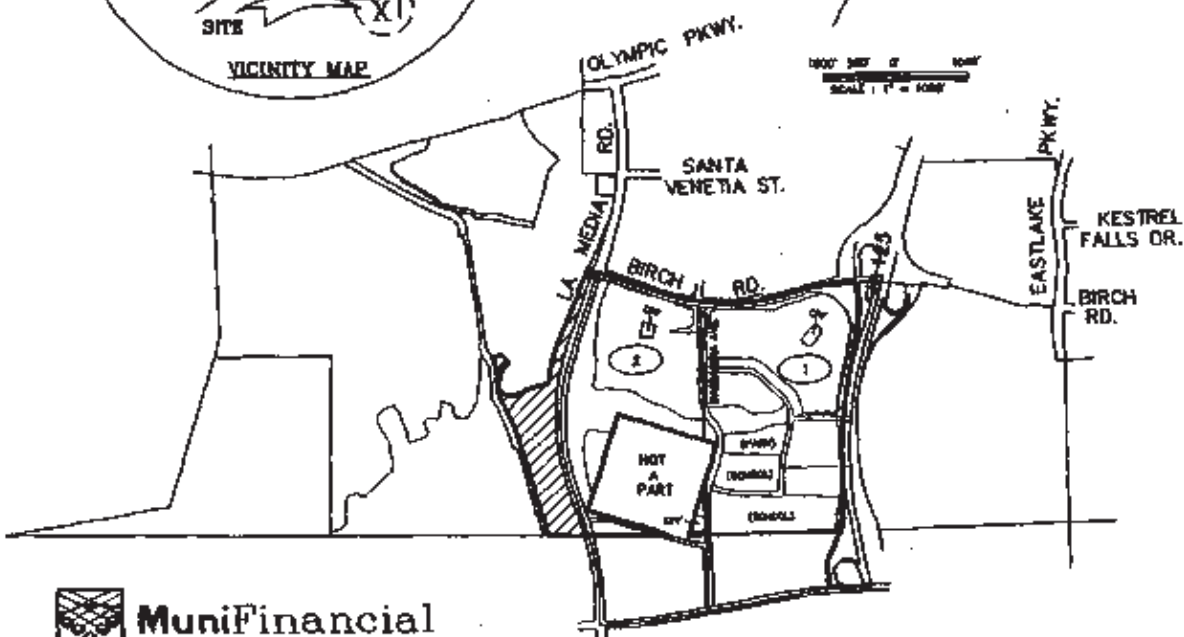
*John Morris*  
CITY CLERK  
CITY OF CHULA VISTA



MADE THIS 15<sup>th</sup> DAY OF MARCH 2008, AT THE HOUR OF  
THE 10<sup>th</sup> O'CLOCK A.M. IN THE BOOK 2008-0315 OF MAPS OF ASSESSMENT AND  
COMMUNITY FACILITIES DISTRICTS, PAGE 1 AND AS INSTRUMENT NO.  
2008-0315 IN THE OFFICE OF THE COUNTY RECORDER IN THE  
COUNTY OF SAN DIEGO, STATE OF CALIFORNIA.  
*John Morris*  
COUNTY RECORDER  
COUNTY OF SAN DIEGO  
STATE OF CALIFORNIA

THE LINES AND DIMENSIONS OF EACH LOT OR PARCEL SHOWN ON THE DIAGRAM  
SHALL BE THOSE LINES AND DIMENSIONS AS SHOWN ON THE SAN DIEGO COUNTY  
ASSESSOR'S MAPS FOR THOSE PARCELS LISTED.

THE SAN DIEGO COUNTY ASSESSOR'S MAPS SHALL CONTROL FOR ALL DETAILS  
CONCERNING THE LINES AND DIMENSIONS OF EACH LOT OR PARCEL.



- LEGEND
- CFD BOUNDARY
  - IMPROVEMENT AREA NUMBER
  - CFF
  - INTENDED TO BE EXCLUDED BY FUTURE ACTION FROM BOUNDARY OF THE DISTRICT

**MuniFinancial**  
FROM THE INCORPORATED  
BANKS OF  
SAN DIEGO, CALIFORNIA 92101-2000  
Phone (619) 447-2800 Fax (619) 447-2800

IMPROVEMENT AREA	ASSESSOR'S PARCEL NO.
1	043-288-10-00
2	043-288-12-00

(08-0284) MARCH 2008

2005-050/204

BK39 1651