

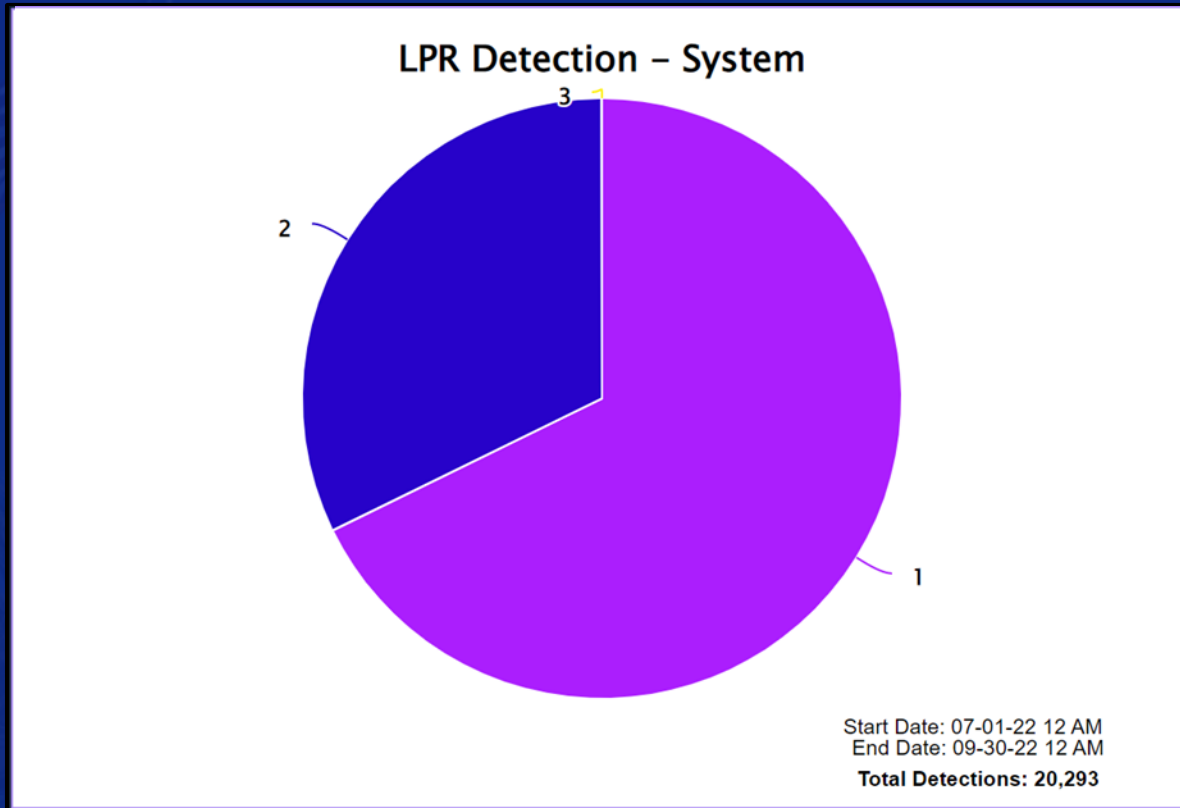


Automatic License Plate Recognition (ALPR)

---

Quarterly Audit Report – July to September 2022

# ALPR Total Detections

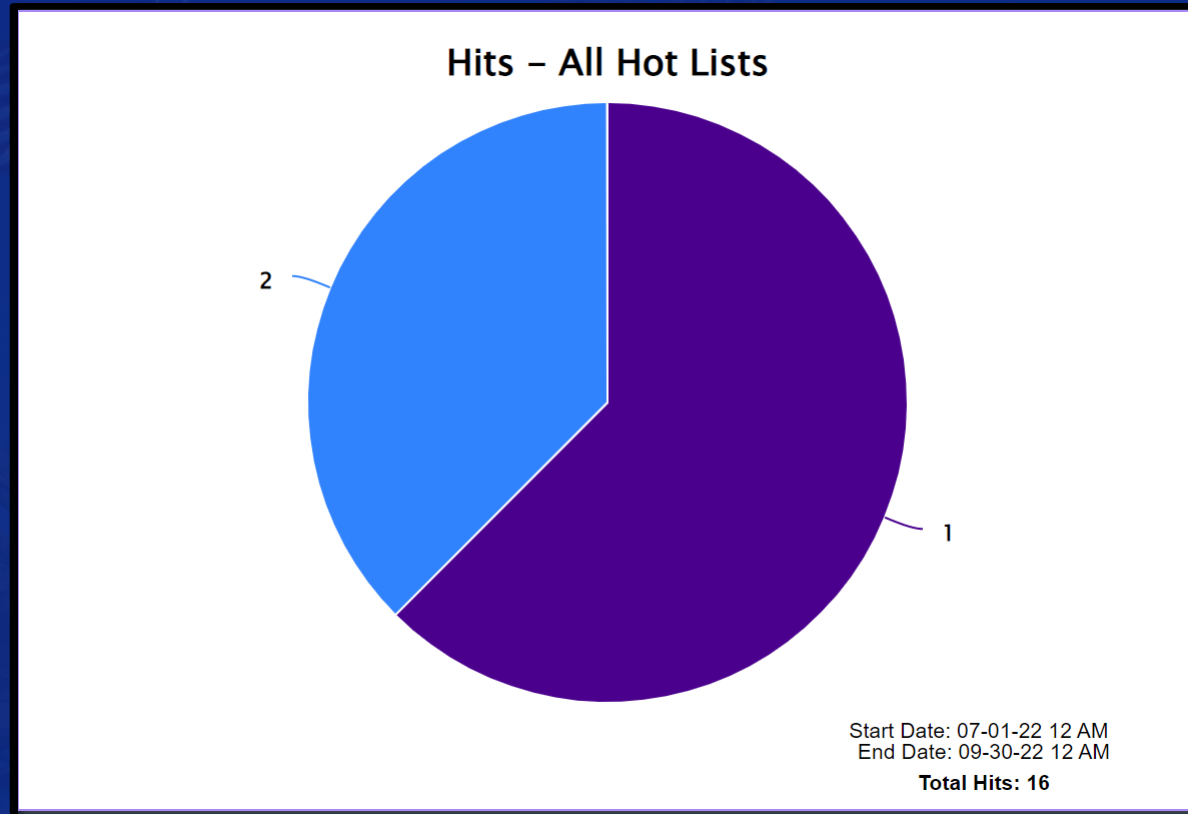


Contributor	System	Detections
1	P21	13750
2	P11	6541
3	Mobile Companion	2

P11 and P21 = Marked Police Vehicles



# ALPR Total Hit Detections



## HIT LIST SOURCE TYPES:

\*CA-DOJ\_SLR = Dept of Justice Stolen License Plates \*CA-DOJ\_SVS = Dept of Justice Stolen Vehicle System



# ALPR Total Hit Detections

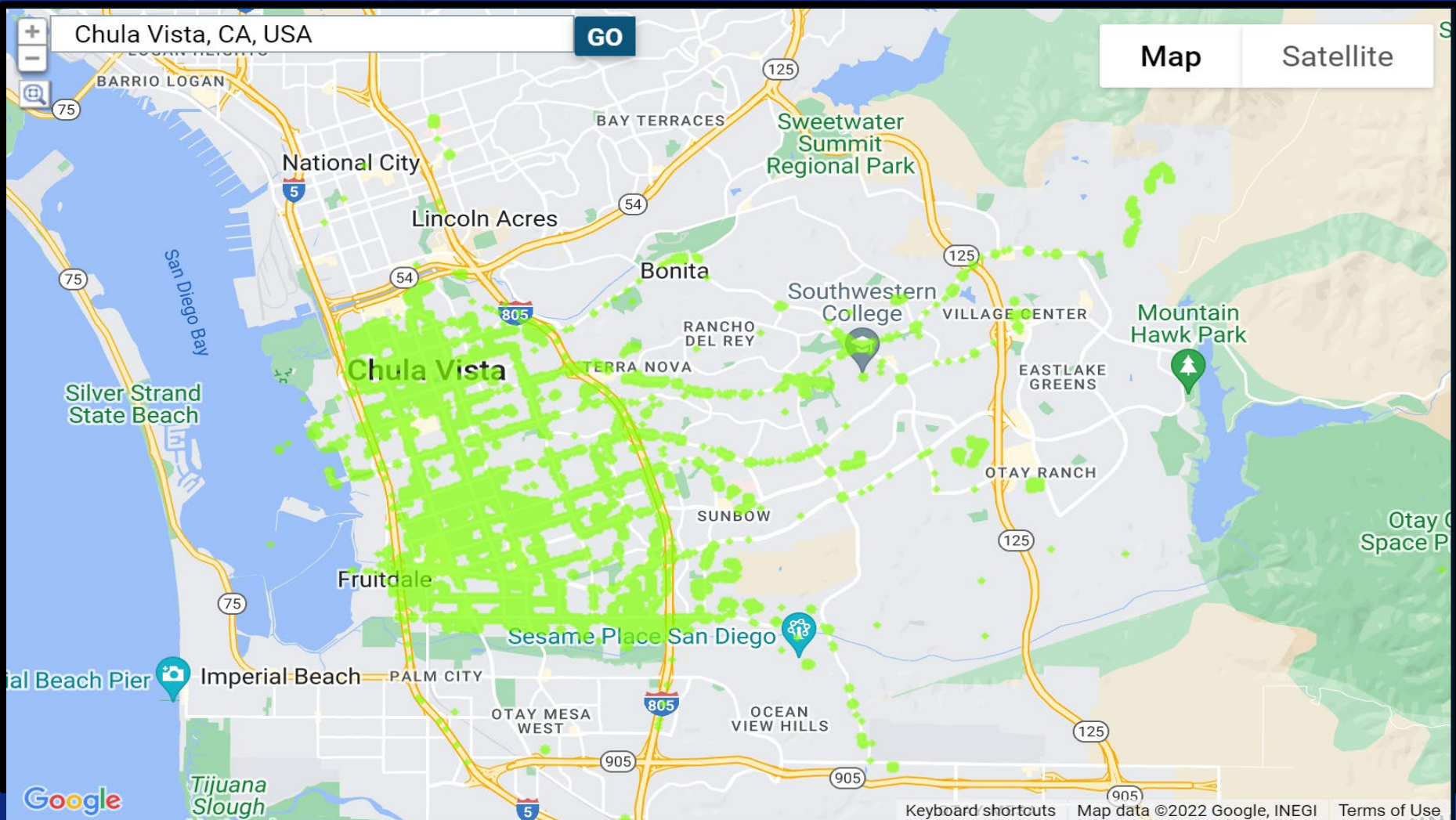
Hot List Type	Hot List Source	Hits	Date of Load
1	CA-DOJ_SLR	10	Not Available
2	CA-DOJ_SVS	6	Not Available

HIT LIST SOURCE TYPES:

\*CA-DOJ\_SLR = Dept of Justice Stolen License Plates \*CA-DOJ\_SVS = Dept of Justice Stolen Vehicle System



# ALPR Density Map of Chula Vista – Total Detections 19,629\*

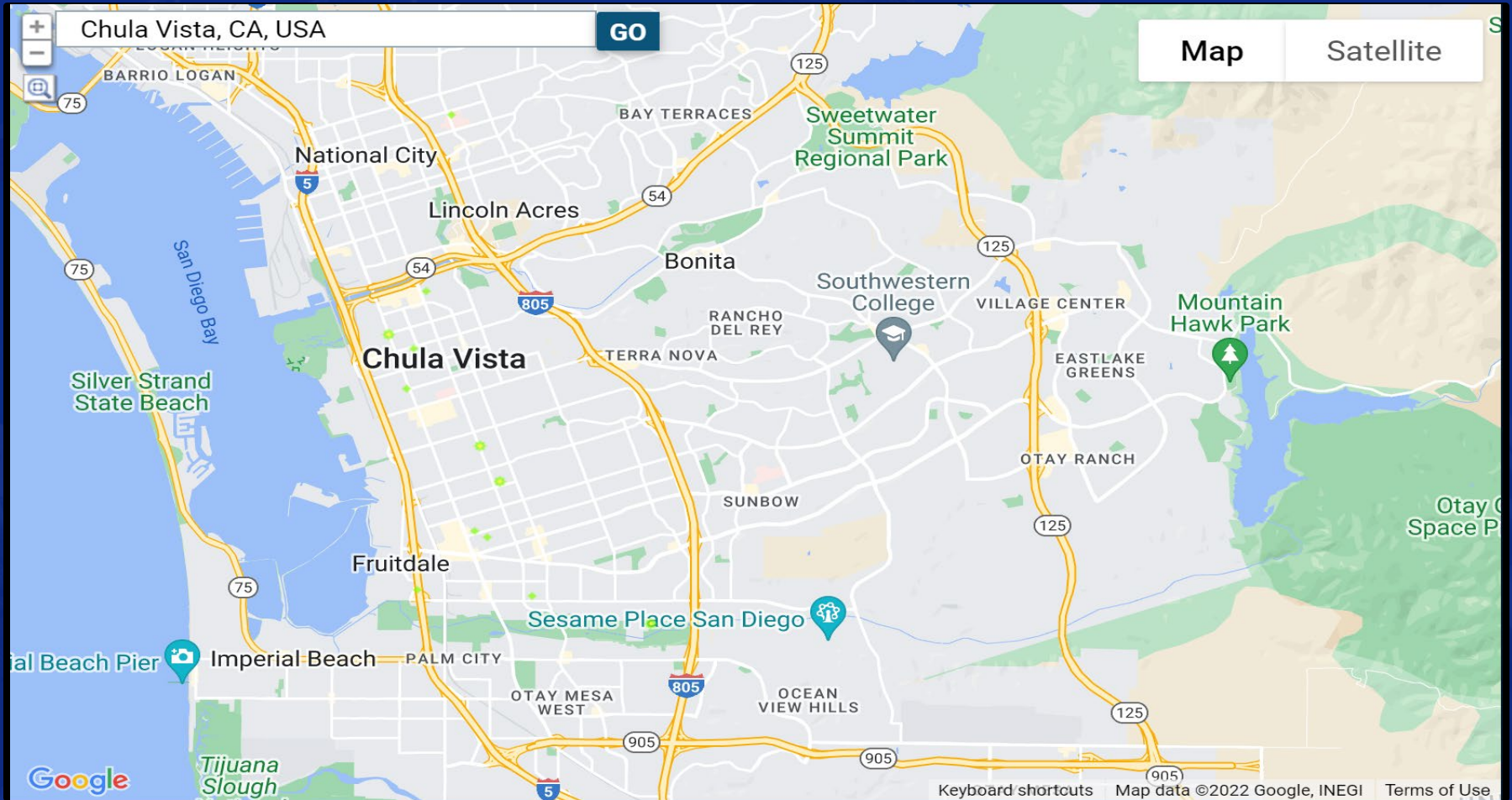


\*CVPD ALPR Total Detections depict only hits inside the density map area.

July – September 2022



# ALPR Density Map of Chula Vista – Total Hit Detections 16\*



\*CVPD ALPR Total Hits depict only hits inside the density map area

July – September 2022



# ALPR Overview for the City of Chula Vista Quarterly Audit Results

Audit Type	Total
ALPR Total Detections	20,293
ALPR Total Hit Detections	16
ALPR Density Map Total Detections	19,629
ALPR Density Map Total Hit Detections	16
ALPR Detection Browsing by CVPD Users	1,662

\*ALPR queries by CVPD users that returned a result and queries that did not return a result.

