

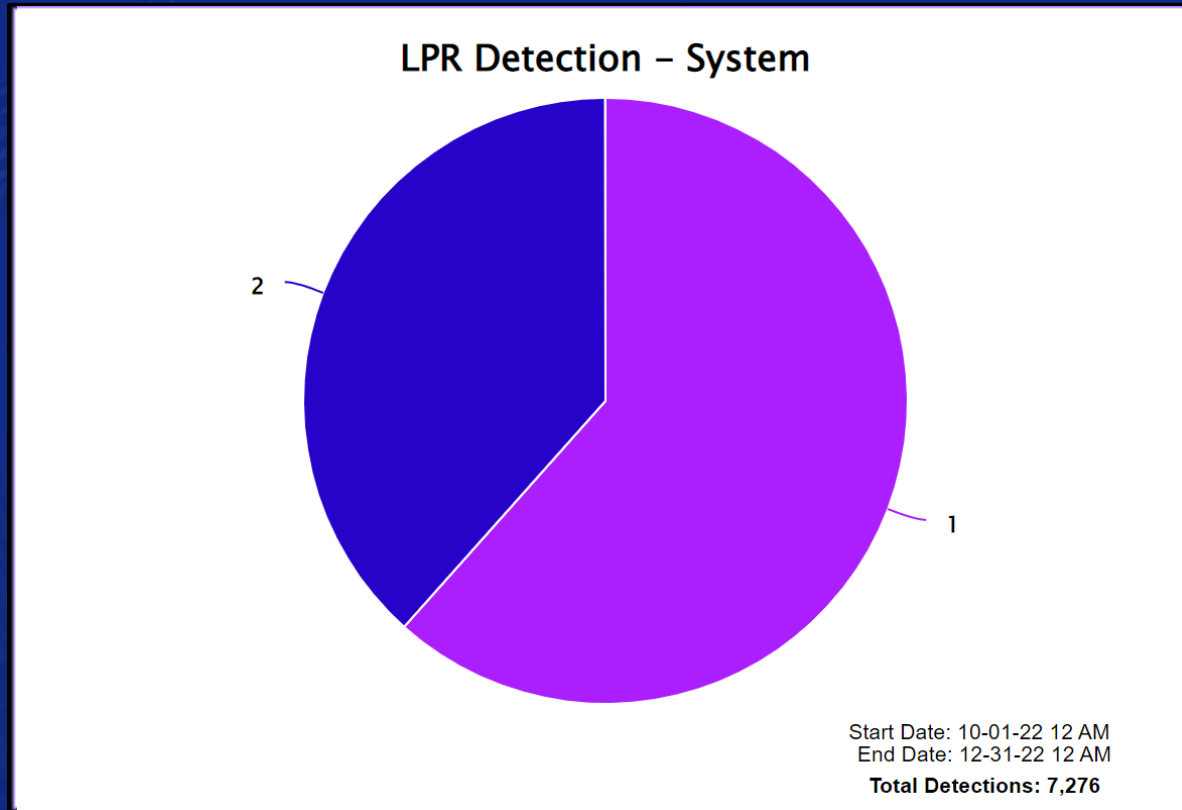


Automatic License Plate Recognition (ALPR)

---

Quarterly Audit Report – October to December 2022

# ALPR Total Detections

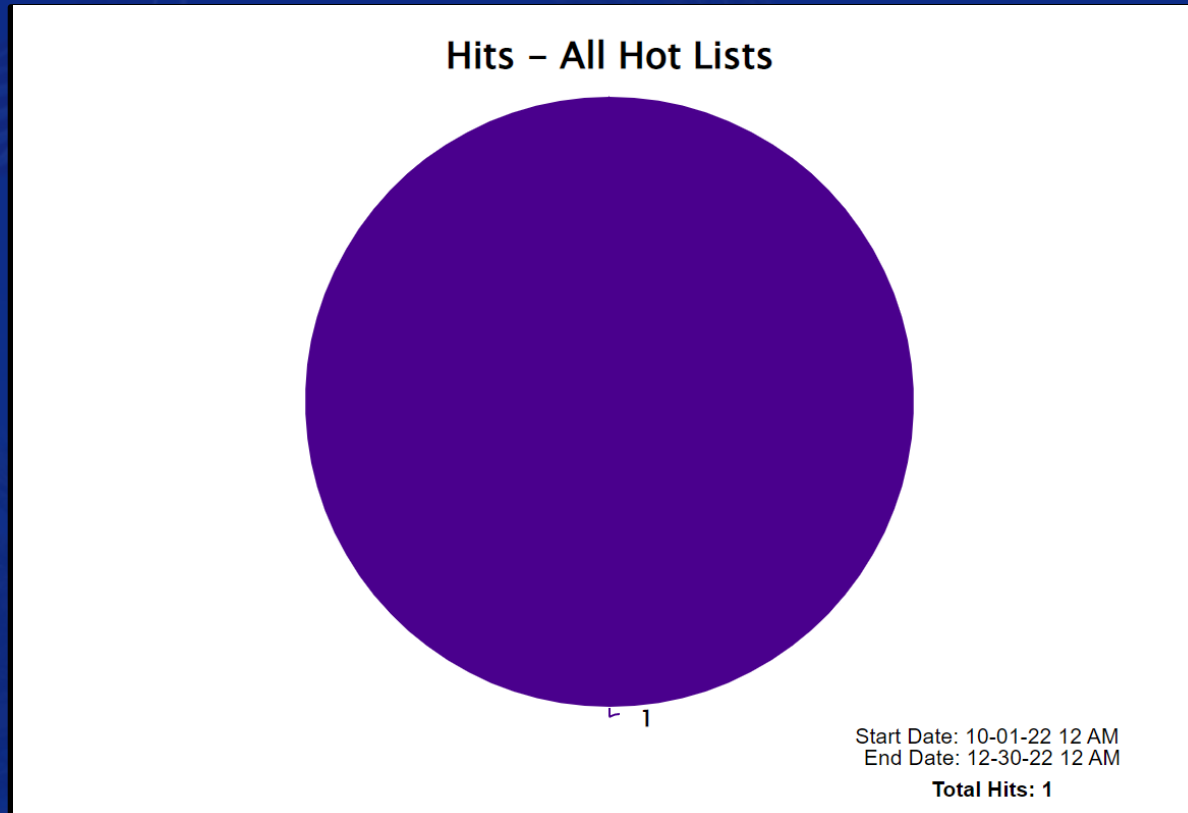


Contributor	System	Detections
1	P11	4483
2	P21	2793

P11 and P21 = Marked Police Vehicles



# ALPR Total Hit Detections



HIT LIST SOURCE TYPES:

\*CA-DOJ\_SLR = Dept of Justice Stolen License Plates \*CA-DOJ\_SVS = Dept of Justice Stolen Vehicle System

October – December 2022



# ALPR Total Hit Detections

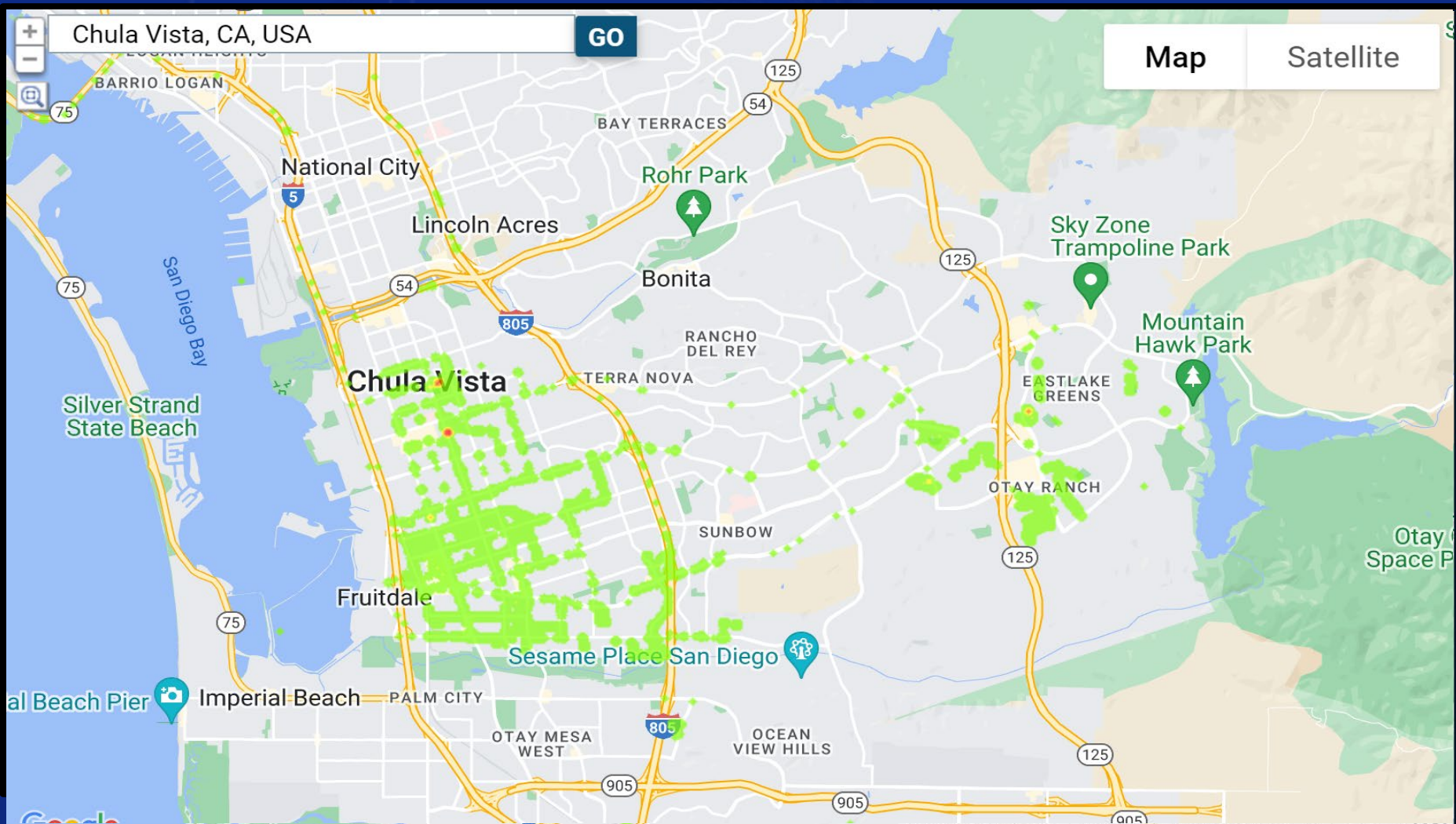
Hot List Type	Hot List Source	Hits	Date of Load
1	CA-DOJ_SLR -	1	Not Available

## HIT LIST SOURCE TYPES:

\*CA-DOJ\_SLR = Dept of Justice Stolen License Plates \*CA-DOJ\_SVS = Dept of Justice Stolen Vehicle System



# ALPR Density Map of Chula Vista – Total Detections 7,010\*

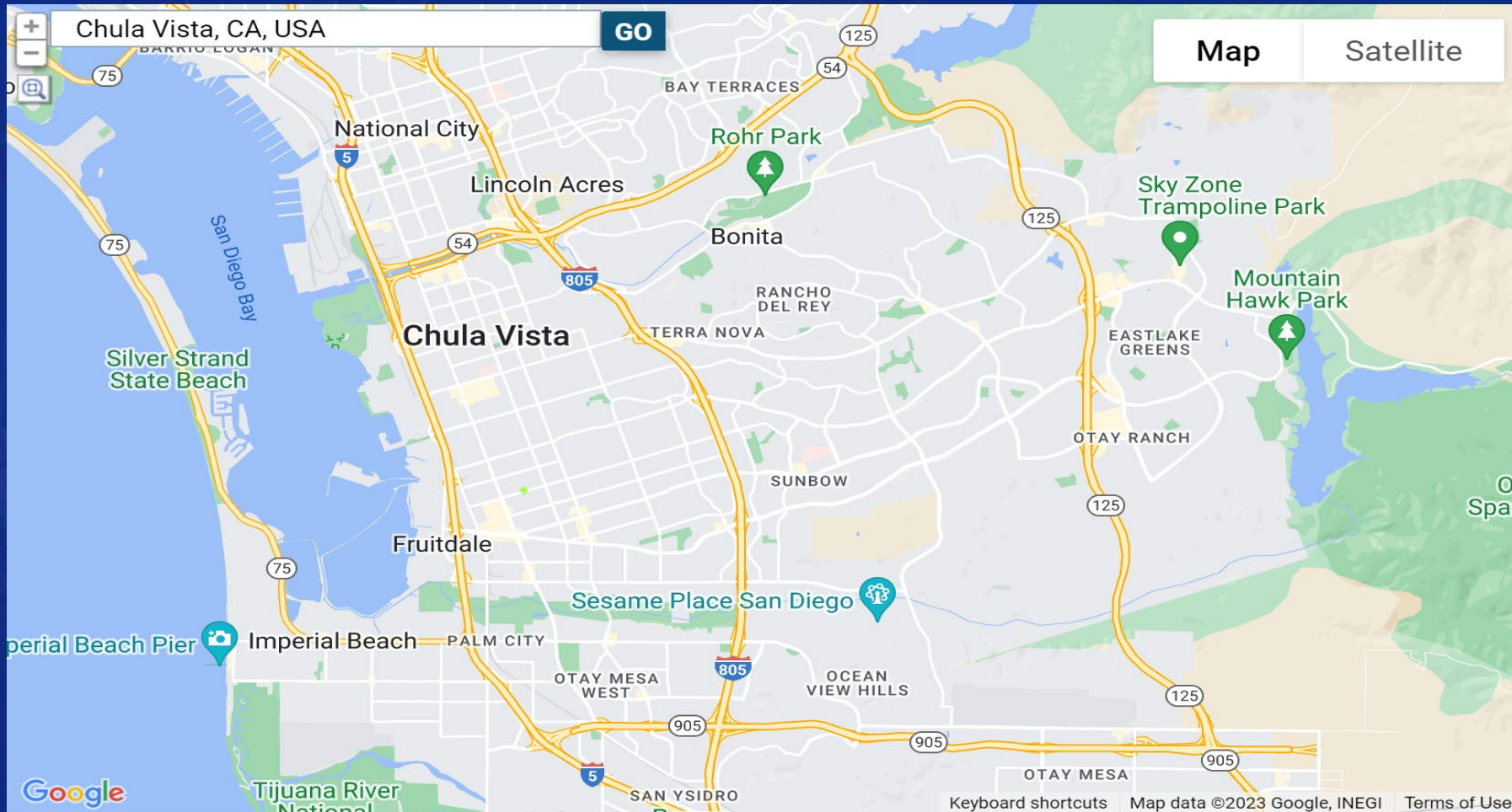


\*CVPD ALPR Total Detections depict only hits inside the density map area.

October – December 2022



# ALPR Density Map of Chula Vista – Total Hit Detections 1\*



\*CVPD ALPR Total Hits depict only hits inside the density map area

October – December 2022



## ALPR Overview for the City of Chula Vista Quarterly Audit Results

Audit Type	Total
ALPR Total Detections	7,276
ALPR Total Hit Detections	1
ALPR Density Map Total Detections	7,010
ALPR Density Map Total Hit Detections	1
ALPR Detection Browsing by CVPD Users	3519

\*ALPR queries by CVPD users that returned a result and queries that did not return a result.

